



**MATCH  
ESTATES**

FIND YOUR  
MATCH



Dover Road, Folkestone

£100,000

2 1 1



**Being Sold via Secure Sale online bidding. Terms & Conditions apply. Starting Bid £100,000**

This charming and spacious two-bedroom maisonette is a fantastic opportunity, offered chain-free and with a share of the freehold.

Perfect for first-time buyers or investors, this property boasts a prime location and excellent features. Located less than half a mile from St Eanswythe's Church of England Primary School, rated Outstanding by Ofsted, and conveniently close to Folkestone town centre and the picturesque harbour, providing easy access to shops, restaurants, and local amenities.

The property features two generously sized bedrooms, spacious living areas filled with natural light, and a spacious kitchen and bathroom. While the property could benefit from some updating, you can put your own mark on it and make it your home.

Additional benefits include a share of the freehold, ensuring long-term security and low ground rent, and being chain-free, allowing for a smooth and swift transaction. This ideal location combines a popular residential area with proximity to vibrant town life. Don't miss out on this excellent opportunity.

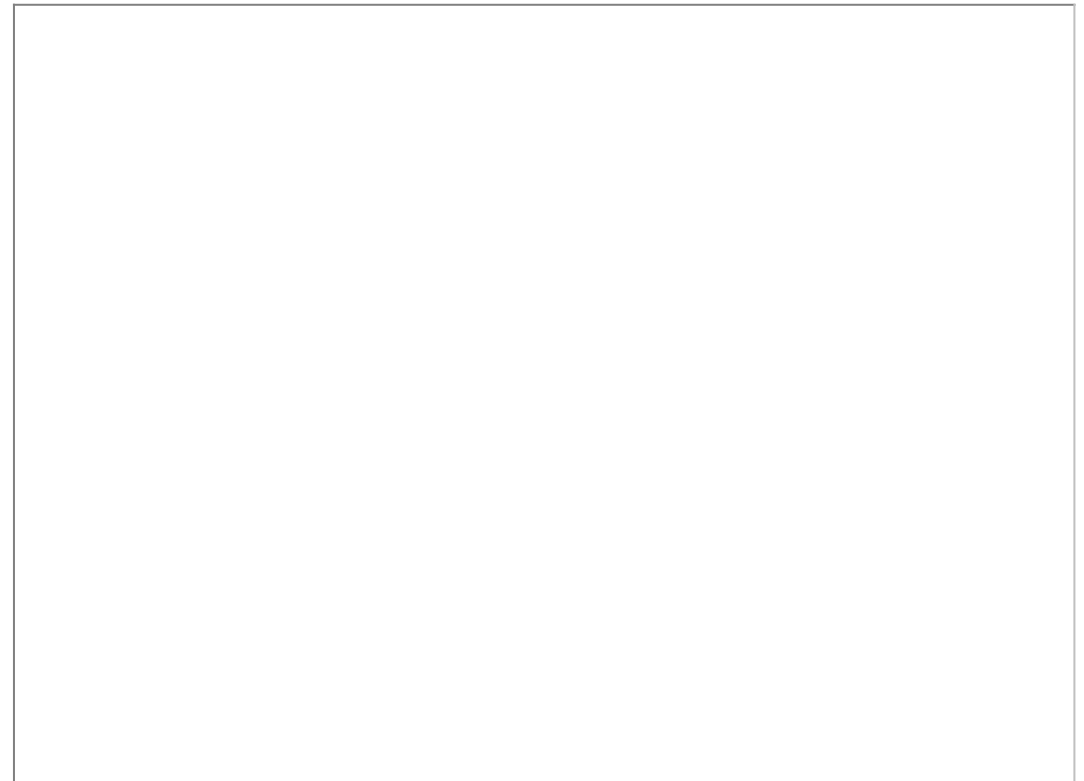
Contact us today to arrange a viewing!

#### Auctioneers Additional Comments

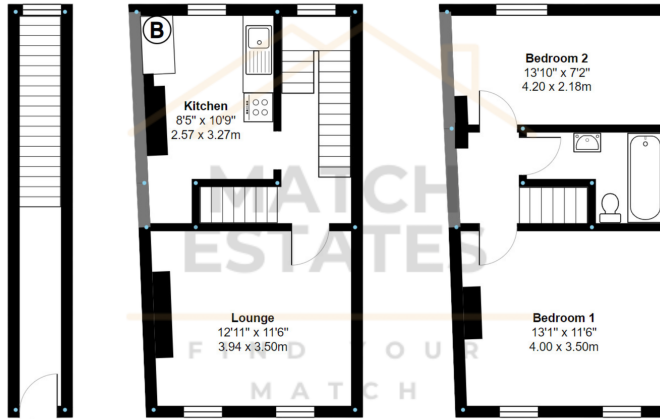
Pattinson Auction are working in Partnership with the marketing agent on this online auction sale and are referred to below as 'The Auctioneer'.

Please be aware that any inquiry, bid or viewing of the subject property will require your details to be shared between both the marketing agent and The Auctioneer in order that all matters can be dealt with effectively.

This auction lot is being sold either by, conditional (Modern) or unconditional (Traditional) auction terms and overseen by the

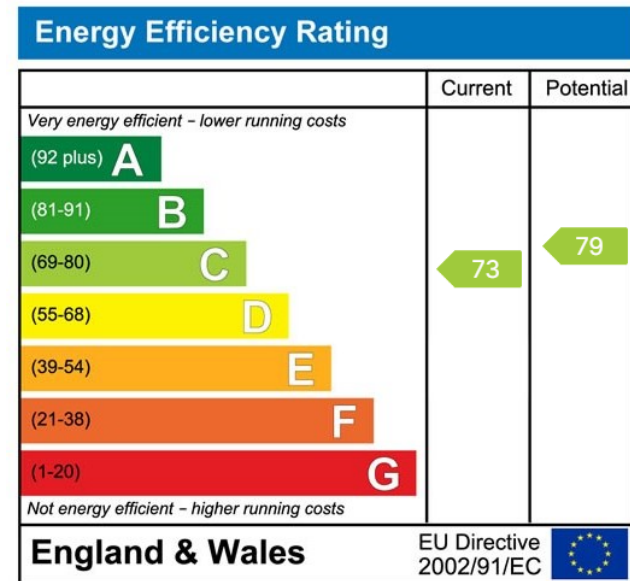
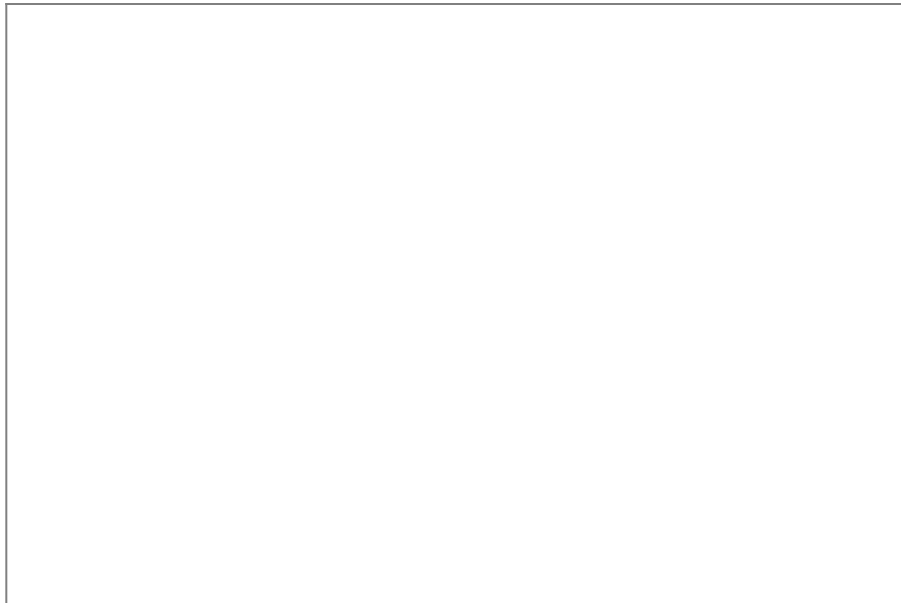






Measurements are approximate and for display purposes only

- No Onward Chain
- Ideal Investment of First Time Buy
- Close To The Harbour & Town Centre
- Share of Freehold
- Spacious Throughout
- Ofsted Rated Outstanding School Less Than 1/2 Mile Away



01303 475085

Match Estates LTD, trading as Match Estates, is a private limited company: 15509408  
 Registered Address: B3 Bouverie House, Folkestone, Kent, CT20 1AE  
 VAT Registration Number: 464 1921 89

[www.match-estates.co.uk](http://www.match-estates.co.uk)

